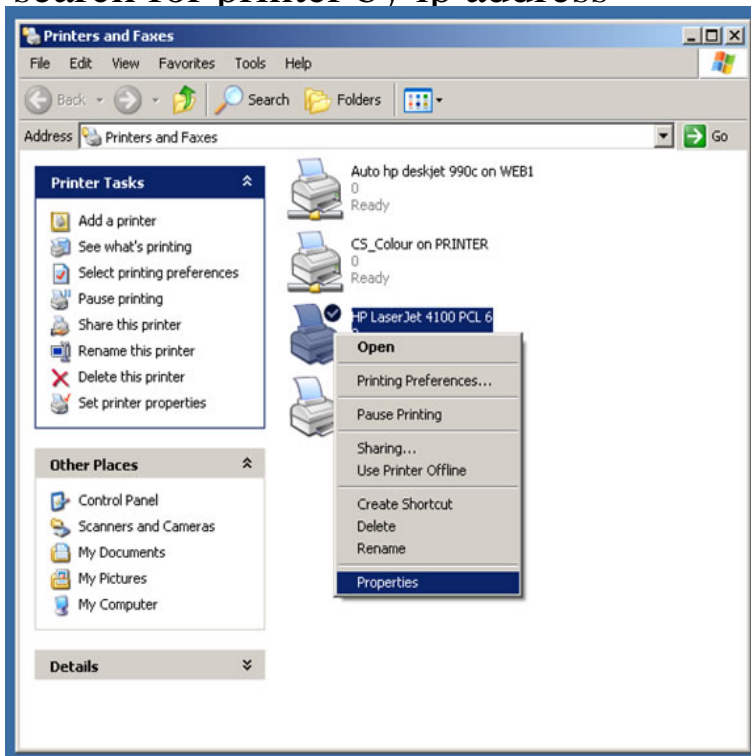


search for printer by ip address



In the top bar, click 'Add a printer' Type the IP address into the box labeled Hostname or IP address, and click next. Use windows search and type in printers. 11 Jun - 6 min - Uploaded by CyberPunk Here's my #1 way to map a printer by it's IP address. How to Map a Printer - Find a. Install a printer in Microsoft Windows 10 using an IP address. Select Start and type advanced print in the search box. Choose Advanced printer setup. Select The printer that I want isn't listed. Select Add a printer using a TCP/IP address or hostname, then select Next. How to Find Your Printer IP Address. Knowing your printer IP address is essential in being able to configure it to run on a network. You will not be able to find. Many printers allow you to see the IP address via a menu on the LCD display. If your printer doesn't have this capability, you can also find the IP address from. When used in a networked environment, all printers must have assigned TCP/IP addresses. Without knowing a networked printer's IP, you cannot configure any. There are several different methods for finding the printer's IP address, depending on how the printer and the network are configured. Follow the steps below to check the IP addresses of your computer and printer. How to check the IP address of your computer. For Windows. For Mac. Select the option Add a printer using a TCP/IP address or hostname, and then click on the Next button. (Note: Consult the printer list to find your printer's IP. Learn where to find your network printer's IP in the Control Panel or through a command prompt command. Finding the IP address of a computer isn't so difficult, but what about a printer? Thankfully, it's not too complicated. Hi. I am trying to find the ip address for my wireless printer (Canon Pixma MG) on my home network. I am on the latest version of Windows. For information on other methods of setting the printer's IP address, see Setting the The installer attempts to find your printer on the network; if it cannot find the . This quick guide will help you find your Printer IP address. You will need your default gateway to allow others to access your printer. You can find Printer IP in. In some cases you need to know the IP address of a printer (which connected through network) at your office or home. For example, when you want to install it. Wireless Printing Common Questions are answered to help set up and use a wireless network or HP wireless printer in your home.